





# FURNACE CROSS REFERENCE GUIDE

WILLIAMS | EMPIRE | COZY



# CROSS REFERENCE COMPATIBILITY CHART

## WILLIAMS - EMPIRE - COZY

	DESCRIPTION	WILLIAMS	EMPIRE	COZY
<b>DIRECT-VENT FURNACES</b> 	Direct-Vent Gravity 14,000 BTU/hr. LPG Furnace	1403821	DV215SGXLP	CDV156C
	Direct-Vent Gravity 14,000 BTU/hr. Natural Gas Furnace	1403822	DV215SGXNAT	CDV155C
	Direct-Vent Gravity 22,000 BTU/hr. LPG Furnace	2203821	DV25SGLP	CDV256C
	Direct-Vent Gravity 22,000 BTU/hr. Natural Gas Furnace	2203822	DV25SGNAT	CDV255C
	Direct-Vent Gravity 30,000 BTU/hr. LPG Furnace	3003821	DV35SGLP	CDV336C
	Direct-Vent Gravity 30,000 BTU/hr. Natural Gas Furnace	3003822	DV35SGNAT	CDV335C
	Direct-Vent Gravity 14,000 BTU/hr. Natural Gas Furnace Includes High Altitude Orifices	14H3822	N/A	N/A
	Direct-Vent Gravity 22,000 BTU/hr. Natural Gas Furnace Includes High Altitude Orifices	22H3822	N/A	N/A
	Direct-Vent Gravity 30,000 BTU/hr. Natural Gas Furnace Includes High Altitude Orifices	30H3822	N/A	N/A
	Direct Vent High-Efficiency 7,400 BTU/hr. LPG Furnace	0743511	N/A	N/A
	Direct Vent High-Efficiency 7,400 BTU/hr. Natural Gas Furnace	0743512	N/A	N/A
	Direct Vent High-Efficiency 17,700 BTU/hr. LPG Furnace	1773511	N/A	N/A
	Direct Vent High-Efficiency 17,700 BTU/hr. Natural Gas Furnace	1773512	N/A	N/A
<b>FORSAIRE® FURNACES</b> 	Forsaire Direct-Vent Counterflow LPG 40,000 BTU/hr. Furnace Intermittent Ignition	4007331	DVC35IPLP	DVCF407 with LPG kit
	Forsaire Direct-Vent Counterflow Natural Gas 40,000 BTU/hr. Furnace Intermittent Ignition	4007332	DVC35IPNAT	DVCF407
	Forsaire Direct-Vent Counterflow LPG 40,000 BTU/hr. Furnace Standing Pilot	4007731	DVC35PPLP	DVCF403 with LPG kit
	Forsaire Direct-Vent Counterflow Natural Gas 40,000 BTU/hr. Furnace Standing Pilot	4007732	DVC35PPNAT	DVCF403
	Forsaire Direct-Vent Counterflow Natural Gas 55,000 BTU/hr. Furnace Intermittent Ignition	5507332	DV55IPNAT	DVCF557
	Forsaire Direct-Vent Counterflow LPG 60,000 BTU/hr. Furnace Standing Pilot	6007731	DV55SPPLP	DVCF553 with LPG kit
	Forsaire Direct-Vent Counterflow Natural Gas 60,000 BTU/hr. Furnace Standing Pilot	6007732	DV55SPPNAT	DVCF553
	Forsaire Electric Forsaire Electric Counterflow 9.2 kW	3144030	N/A	N/A
	Forsaire Top-Vent Counterflow LPG 35,000 BTU/hr. Furnace Intermittent Ignition	3508231	FAW40IPLP	CF407 with LPG kit
	Forsaire Top-Vent Counterflow Natural Gas 35,000 BTU/hr. Furnace Intermittent Ignition	3508232	FAW40IPNAT	CF407
	Forsaire Top-Vent Counterflow LPG 35,000 BTU/hr. Furnace Standing Pilot	3508631	FAW40SPPLP	CF403 with LPG kit
	Forsaire Top-Vent Counterflow Natural Gas 35,000 BTU/hr. Furnace Standing Pilot	3508632	FAW40SPPNAT	CF403
	Forsaire Top-Vent Counterflow LPG 50,000 BTU/hr. Furnace Standing Pilot	5008631	N/A	N/A
	Forsaire Top-Vent Counterflow Natural Gas 50,000 BTU/hr. Furnace Standing Pilot	5008632	FAW55SPNAT	CF553 with LPG kit
	Forsaire Top-Vent Counterflow LPG 55,000 BTU/hr. Furnace Intermittent Ignition	5508231	FAW55IPLP	CF557 with LPG kit
	Forsaire Top-Vent Counterflow Natural Gas 55,000 BTU/hr. Furnace Intermittent Ignition	5508232	FAW55IPNAT	CF557
	Forsaire Top-Vent Counterflow LPG 60,000 BTU/hr. Furnace Standing Pilot	6008831	FAW55SPPLP	CF553 with LPG kit
	Forsaire Top-Vent Counterflow Natural Gas 60,000 BTU/hr. Furnace Standing Pilot	6008832	FAW55SNAT	CF553
	Forsaire Top-Vent Counterflow LPG 65,000 BTU/hr. Furnace Standing Pilot	6508631	N/A	N/A
	Forsaire Top-Vent Counterflow Natural Gas 65,000 BTU/hr. Furnace Standing Pilot	6508632	N/A	N/A

## DESCRIPTION

WILLIAMS

EMPIRE

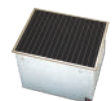
COZY

MONTEREY  
FURNACES

Monterey 25,000 BTU/hr. LPG Top-Vent Furnace - 1 in. side clearance	2509621A	GWT25WLP	W256G
Monterey 25,000 BTU/hr. Natural Gas Top-Vent Furnace - 1 in. side clearance	2509622A	GWT25WNAT	W255G
Monterey 25,000 BTU/hr. Natural Gas Top-Vent Furnace Includes the High Altitude Orifices - 1 in. side clearance	25H9622A	N/A	N/A
Monterey 35,000 BTU/hr. LPG Top-Vent Furnace - 1 in. side clearance	3509621A	GWT35WLP	W356G
Monterey 35,000 BTU/hr. Natural Gas Top-Vent Furnace - 1 in. side clearance	3509622A	GWT35WNAT	W355G
Monterey 35,000 BTU/hr. Natural Gas Top-Vent Furnace Includes the High Altitude Orifices - 1 in. side clearance	35H9622A	N/A	N/A
Monterey 50,000 BTU/hr. LPG top-Vent Furnace (Dual) - 1 in. side clearance	5009621A	GWT50WLP	W506G
Monterey 50,000 BTU/hr. Natural Gas Top-Vent Furnace (Dual) - 1 in. side clearance	5009622A	GWT50WNAT	W505G
Monterey 50,000 BTU/hr. Natural Gas Top-Vent Furnace Includes the High Altitude Orifices - 1 in. side clearance	50H9622A	N/A	N/A
Monterey Plus 25,000 BTU/hr. LPG Top-Vent Furnace - 4 in. side clearance	2509821	GWT25WLP	W256G
Monterey Plus 25,000 BTU/hr. Natural Gas Top-Vent Furnace - 4 in. side clearance	2509822	GWT25WNAT	W255G
Monterey Plus 35,000 BTU/hr. LPG Top-Vent Furnace - 4 in. side clearance	3509821	GWT35WLP	W356G
Monterey Plus 35,000 BTU/hr. Natural Gas Top-Vent Furnace - 4 in. side clearance	3509822	GWT35WNAT	W355G
Monterey Plus 50,000 BTU/hr. LPG Top-Vent Furnace (Dual) - 4 in. side clearance	5009821	GWT50WLP	W506G
Monterey Plus 50,000 BTU/hr. Natural Gas Top-Vent Furnace (Dual) - 4 in. side clearance	5009822	GWT50WNAT	W505G

ROOM  
CONSOLE  
HEATERS

Room Console Heater - Enclosed Front 20,000 BTU/hr. LPG	2001621A	N/A	VC201C with LPG kit
Room Console Heater - Enclosed Front 20,000 BTU/hr. Natural Gas	2001622A	N/A	VC201C
Room Console Heater - Enclosed Front 35,000 BTU/hr. LPG	3501521A	RH-35LP	VC352B
Room Console Heater - Enclosed Front 35,000 BTU/hr. Natural Gas	3501522A	RH-35NAT	VC351C
Room Console Heater - Enclosed Front 50,000 BTU/hr. LPG	5001521A	RH50CBLP	VC502B
Room Console Heater - Enclosed Front 50,000 BTU/hr. Natural Gas	5001522A	RH50CNAT	VC501C
Room Console Heater - Enclosed Front 65,000 BTU/hr. LPG	6501521A	RH65CLP	N/A
Room Console Heater - Enclosed Front 65,000 BTU/hr. Natural Gas	6501522A	RH65CNAT	N/A
Room Console Heater - Fireplace Front 35,000 BTU/hr. Natural Gas	3502522A	N/A	N/A
Room Console Heater - Fireplace Front 50,000 BTU/hr. Natural Gas	5002522A	N/A	N/A
Room Console Heater - Fireplace Front 65,000 BTU/hr. Natural Gas	6502522A	N/A	N/A

FLOOR  
FURNACES

Floor Furnace Natural Gas 45,000 BTU/hr.	4505622A	5088NAT	90N50A
Floor Furnace Natural Gas 60,000 BTU/hr.	6005622A	7088NAT	90N65A



# ABOUT

For over 100 years, Williams has been a market leader in residential thermal comfort products. Today, we continue with this tradition by offering a wide selection of configurations and sizes to fit your needs.

# OUR BRAND

Based in Southern California, we serve all markets across the U.S. with an increasing international demand for our high quality and energy efficient products. Our 500,000 square feet of manufacturing and engineering space allows us to concept and introduce top-of-the-line furnace technologies. Our pledge to you is to provide efficient, top-quality and timely support for the successful completion of your construction project, big or small. Our professional customer service representatives are available to ensure you have a seamless experience each time you choose Williams.

## COMPLETE LINE OF HEATING SOLUTIONS

After a century of business, Williams has not only kept pace with ever-evolving heating and cooling advances but led the charge in new technologies, continuing to innovate above the competition. We are now the industry leader, not only meeting ever more stringent efficiency standards, but exceeding them. It's the right thing to do for our customers and the environment.

## CHOOSING THE RIGHT SIZE FURNACE

### HOW TO DETERMINE BTU/hr. SIZE

Multiply the room size (length x width x ceiling height) to be heated by the factor below to obtain INPUT BTU/hr. needed to maintain an approximate inside temperature of 70°F.

Example: 900 square feet area with an 8' ceiling; ceiling and wall insulation with a normal outside temperature of 30°F; 30' length X 30' width X 8' ceiling height X 4 = 28,800 BTU/hr. Select the direct-vent or top-vent furnace nearest to the size you need.

OUTSIDE WINTER TEMPERATURE (F)	-30	-20	-10	0	10	20	30	40	50
NO INSULATION	14	13	12	10	9	8	6	5	4
CEILING INSULATION ONLY	13	12	11	9	8	7	5	4	3
CEILING & WALL INSULATION	12	11	10	8	7	6	4	3	2

