

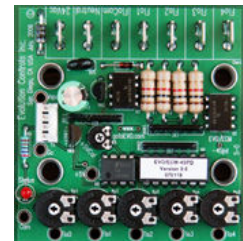
# EC MOTOR TROUBLESHOOTING

## 1. POWER AND CONTROL INPUTS

- a. Check power input to motor
- b. Check signal input from controls
  - i. If variable volume 2-10VDC, control signal should be 2-10VDC
  - ii. If 3-spd w/standard speed splits or 3-spd w/user-input speed splits, controls should be 24VAC for the speed selected

## 2. ECM CONTROL BOARDS (2-10VDC CONTROL OR USER-INPUT SPEED SPLITS)

- a. Check 24VAC hot and 24VAC common to board where wire diagram specifies
- b. EVO 0-10VDC board
  - i. Green signal light will blink if powered
  - ii. Red status light will be on if receiving feedback from motor (for Genteq brand only)
- c. EVO 5-spd board
  - i. Red status light will be on if receiving feedback from motor (for Genteq brand only)
- d. If motor is not changing speed with different inputs, the board is likely bad



## 3. NIDEC BRAND 16X4W CONVERSION BOX

- a. TX (blinking green light) means box is powered
- b. RX (blinking yellow light) means box is seeing feedback from motor (motor is powered)
- c. PW (blinking red light) means the motor is operating

